

OBTURATION  
INNOVATION

## BioRoot™ RCS: superior seal, smooth liner and so much more

	Bioroot™ RCS	Epoxy-Based Sealers	Zinc Oxide Eugenol Pastes
OUTSTANDING SEAL	✓	✓	✓
EASY TO USE	✓	✓	✓
BIOACTIVE	✓	✗	✗
HIGH pH (>11)	✓	✗	✗
RESIN-FREE FORMULATION	✓	✗	✓
HYDROXY-APATITE FORMATION	✓	✗	✗
DENTINE MINERALIZATION	✓	✗	✗
RADIOPAQUE	✓	✓	✓

## BioRoot™ RCS comes in a convenient hand-mix presentation

- Full control of dosage, therefore less material waste
- Full control of the final viscosity
- Reduced risk of cross contamination



### 35-application pack

- 15 g powder bottle
- 35 single dose containers

ACTIVE  
BIOSILICATE  
TECHNOLOGY



The Dental Pharmaceutical Company

INNOVATIVE, SAFE AND EFFECTIVE SOLUTIONS FOR DENTISTRY WORLDWIDE



# BioRoot™ RCS

Much more than *just* a superior root canal sealant

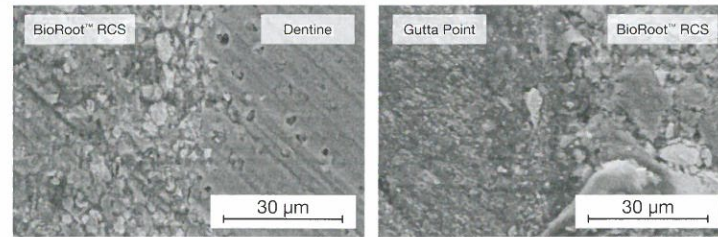


# 4 innovative features for successful obturations

## 1 Superior seal

### Tight interface

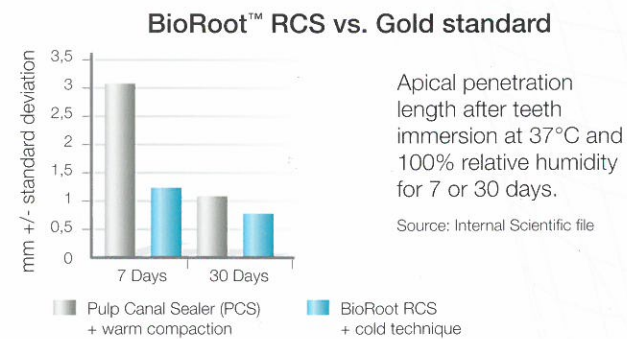
- Outstanding adhesion to dentine and gutta-percha points
- Less risks of voids



Tight dentine/BioRoot™ RCS/Gutta-Percha interface  
Source: Internal Scientific file

### High microleakage resistance

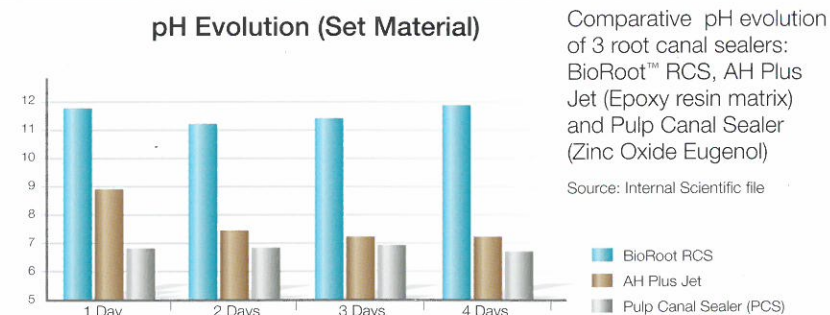
- BioRoot™ RCS crystallization for a 3 dimensional seal
- Dentine structure mineralisation through hydroxy-apatite formation
- Better early microleakage resistance than warm technique



## 2 Antimicrobial properties

### Creates a favourable alkaline environment

- Calcium hydroxide release
- Allows increase of pH value >11
- Prevents bacterial growth leading to clinical failures



## 3 Peri-apical healing

### Maximizes chances of success

- High purity mineral formulation
- Bioactive obturation:
  - stimulates bone regeneration
  - promotes periodontal healing

## 4 Easy obturations & follow-up

### Fast placement

- Easy coating of root canal walls
- Rapid insertion of the Gutta-Percha point
- Optimized working and setting times:
  - Working time: > 10 minutes
  - Setting time: < 4 hours

### Easy follow-up

- 5 mm Al radiopacity for easy follow-up on the radiograph
- Simple retreatment: use in combination with Gutta-Percha points

### Clinical implementation

